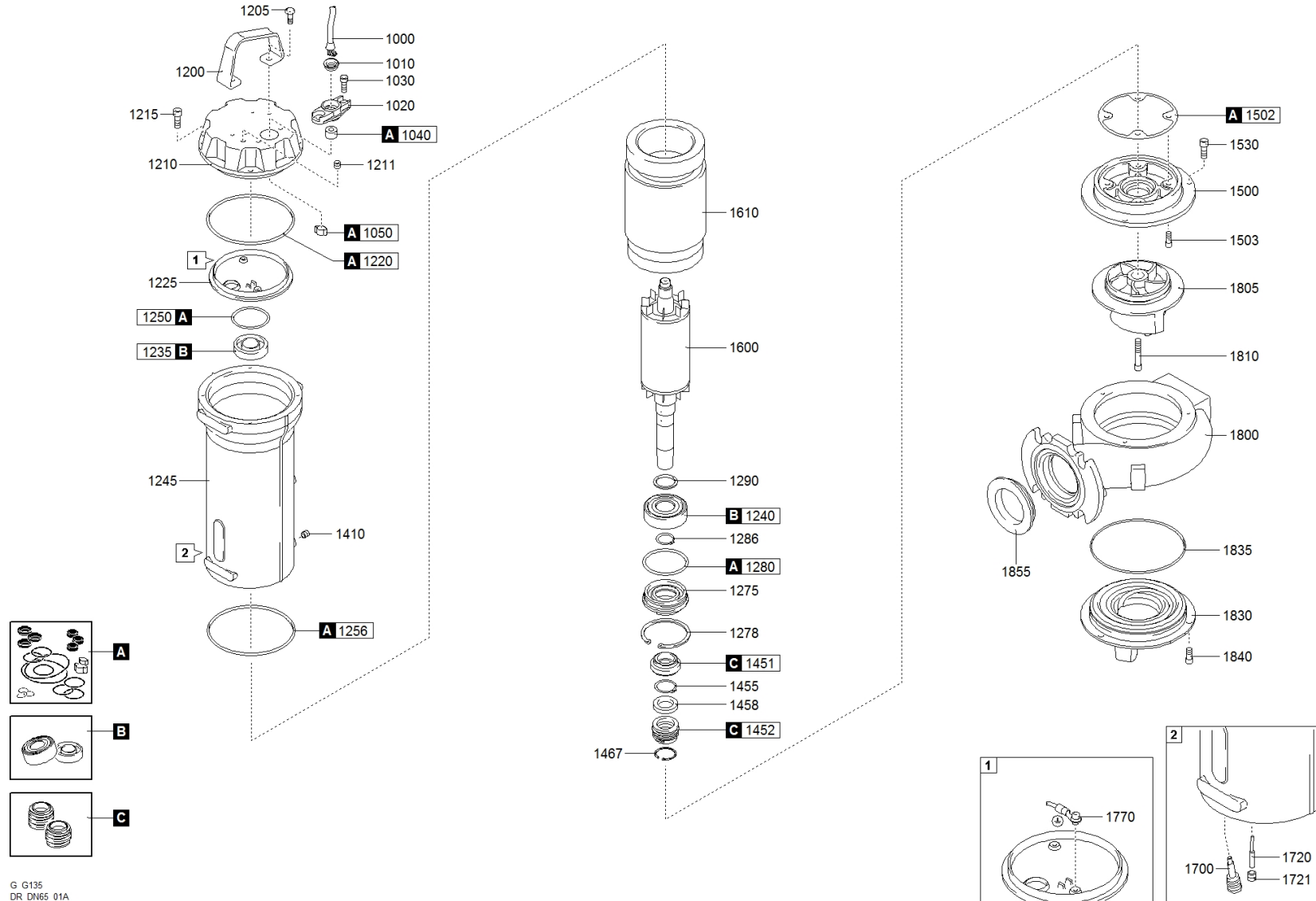


1431.001 - DRG 300/2/65 A0ET5 NGTAB51040N00NN





water solutions



1431.001 - DRG 300/2/65 A0ET5 NGTAB51040N00NN

	Code	Description	Q.ty
A	601052001	GASKETS KIT	1
C	602052091	MECHANICAL SEALS KIT	1
B	604052001	BEARINGS KIT	1
1000	25020340151000001	POWER CABLE	1
1010	235467216820	RING NUT [POWER CABLE]	1
1020	235423622710	CABLE GLAND [POWER CABLE]	1
1030	270830810203200000	SCREW - CABLE GLAND [POWER CABLE]	4
1040	235672720680	RUBBER GASKET [POWER CABLE]	1
1050	2732001400000	COLLAR CLAMP [POWER CABLE]	1
1200	235232426544	HANDLE	1
1205	270830810201200000	SCREW [HANDLE >> COVER]	2
1211	270139510104000000	CAP [TIGHTNESS TEST]	1
1215	270830810203200000	SCREW [COVER >> MOTOR CASE]	4
1220	271770139035000000	GASKET [COVER >> UPPER BEARING HOLDER]	1
1225	230617025857	UPPER BEARING HOLDER	1
1235	2729062030200000	UPPER BEARING	1
1240	2729063060200000	LOWER BEARING	1
1245	231017025898	MOTOR CASE	1
1250	271770040952620000	GASKET [UPPER BEARING]	1
1256	271770120018000000		1
1275	23915074032027877	LOWER BEARING FLANGE	1
1278	2703207502000000	SEEGER [LOWER BEARING FLANGE]	1
1280	271770068026000000	GASKET [LOWER BEARING FLANGE]	1
1286	2703303001000000	SEEGER [LOWER BEARING >> LOWER BEARING FLANGE]	1
1290	270220300422500000	DISTANCE RING [LOWER BEARING]	1
1410	270139510104000000	CAP [OIL CHAMBER]	1
1451	230000010250000000	1st MECHANICAL SEAL	1
1452	230001810250000000	2nd MECHANICAL SEAL	1
1455	2703302501000000	SEEGER [1st MECHANICAL SEAL >> 2nd MECHANICAL SEAL]	1
1458	270533762109027892	DISTANCE RING [1st MECHANICAL SEAL >> 2nd MECHANICAL SEAL]	1
1467	2703206202000000	SEEGER [2nd MECHANICAL SEAL]	1
1500	236211602527884	PUMP PLATE	1
1502	2750911526543	GASKET [PUMP PLATE]	1
1503	270830810203200000	SCREW [PUMP PLATE >> MOTOR CASE]	4
1520	2750916023613	GASKET [PUMP PLATE >> PUMP BODY]	1
1530	270830810203200000	SCREW [PUMP PLATE >> PUMP BODY]	4
1600	230235012426568	SHAFT WITH ROTOR	1
1610	231101243021000000	WOUND STATOR	1

1800	21251016025526930	PUMP BODY	1
1805	21411OC120NN27209	IMPELLER	1
1810	270830810253200000	LOCKING IMPELLER	1
1830	2162117027241	SUCTION FLANGE	1
1835	2750917023063	GASKET [PUMP BODY >> SUCTION FLANGE]	3
1835	2750917023063	GASKET [PUMP BODY >> SUCTION FLANGE]	3
1840	270830810163200000	SCREW [SUCTION FLANGE >> PUMP BODY]	3
1840	270830810203200000	SCREW [SUCTION FLANGE >> PUMP BODY]	4
1855	2750725403390	DISCHARGE GASKET	1